



HOUSING



Make Your dreams come True



ETAP HOUSING

INDEX

page

1	front page
2	index
3	ETAP intro
4	company overview
5	building details
6	our mission
7	building advantages
8	unwelded structure
9	fiber cement details
10	software
11	start
12	TV-156 Two storey Villa 156m2
13	V-106 (Single storey Villa 106 m2)
14	plan
15	V-92
16	
17	V-92-1
18	
19	V-88
20	
21	V-69
22	
23	V-58
24	
25	V-47
26	
27	V-37
28	
29	V-27
30	

ETAP HOUSING

PREFABRICATED BUILDINGS

*** The Ultimate Sign for Quality**

*** Since 1970 , we are in building and construction.**

*** The New developed Houses respect the actual environment demand from 2020, and fullfill all EUropeen norming concerning insulation, * zero environment and power demand**



We developed more than 30 single and double standard villas and houses, who give you an economic advantage , far away from our competitors . (from 28 - 159 m2 living space) EtapHousing means: LifeLong Quality , Green Investment, Your best choice for living.

EtapHousing - a Mic Company , Be - 9980 St Laureins Belgium

Be : Tel +32 9 348 48 48 Fax: +32 9 348 95 16 Email : housing@etapyachting.com

NI - Axel :+31,115,788 118 PI - Kolo : +48,918,871 044 Lu : +35,22,7860 237 In -Cherthala/Kerala 91,478 2812528



Since 1970 , a sign for quality in Sailing and Building Construction,

*You find our respected customers anywhere in the world ,
or Worldwide Sailing , or Living the Etap-Way .*

EtapYachting.com



The worlds only Unsinkable and High Quality Sailing Yachts

A full range from 21 up to 48 foot Sailing Yachts
(7 - 15 m)

Etap - Gtc Containers

*EASY TRANSPORTATION AND
INSTALLATION*

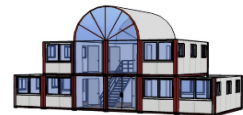


Dubai construction area
From Flat-Pack to full-unlimited container constructions



Office and Housing Containers

- * 2,4x6
- * 3x6
- * All Possible connected constructions



Complete unlimited Offices and
Container Housing

Etap - Gtc Tents and Storage

Constructions and Tents for : * Storage * Production * Tennis * Swimming Pools
* Maneges(Horse) * Garages * Parties * etc



- * 6 - 40 m free span width
- * 2,5 - 6 m side height
- * Unlimited length
- * Siimple pvc versions up to fully insulated



Etap Housing

The new way for Housing and Building Constructions



*Single and Double Storey Housing in unlimited
variants;*

Life Time Construction
Fast ,easy and economic construction
Insulation and aesthetic unmatched



*Etap -Yachting, -Housing , -Gtc , are registered trademarks from Mic
facilities in Belgium - Netherlands - Germany - Poland - India - China*



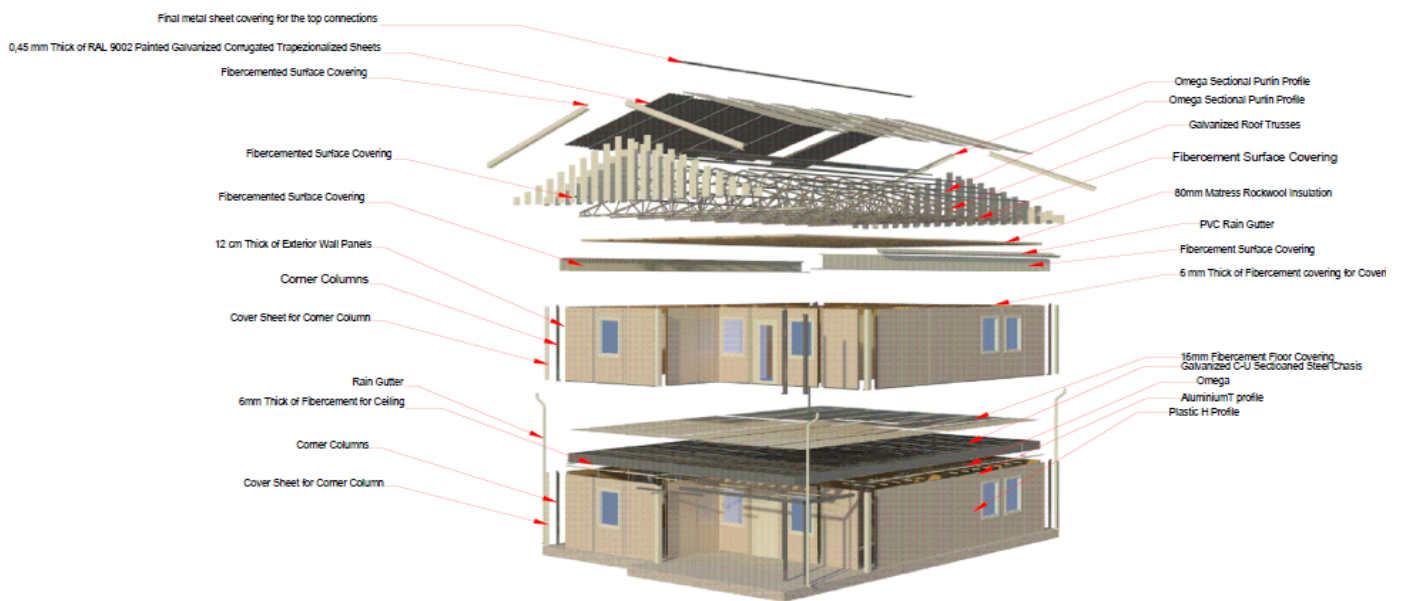
Technically very advanced Life-Time Construction

Fibre Cement Boards, Etex type , available in many patterns

Fully Galvanised base steel construction for fast and lifetime durance.

A wide range of standard houses, to make Your choice more easy.

DOUBLE STOREY BUILDING DETAILS



Advanced Technology for your comfort



Vision

Mission

Aims

Quality Policy

Services

Vision
To change the construction culture (construction system) .

Mission
Meet all people' housing requirements by creating reliable, aesthetic, economical, ready and habitable places, offer a life.

Aims
To meet all the customers with our products in maximum level to increase the number of ready-construction showrooms at inboard and abroad for raising the portion of our company in the market, developing new products by using the lastversion and high technology in prefabricated construction sector, supplying high qualified products with our best and fast services to ensure customer pleasure.

Quality Policy
'Prolonged development' and 'customer focused' are our company principles within its aims and strategical policy line.

Services
• Planning and design, • Building and container manufacturing facility, • Loading, • Logistic • Assembly, • Electrical and sanitary installation process inside the building, • Painting facility, • De-mounting and mounting facility, • Post - sale services,

Our Mission



Our Advantages,

The Advantages of EtapHousing - Villas and Houses

Super High Etap Quality - Insulation - Estetique - Life Time - Economic



All our products are manufactured by using unwelded structure technology.



Prefabricated buildings can be assembled and disassembled many times.



Facade covering material of our products is fibercement.



Prefabricated buildings can be manufactured in required dimensions and design as two or three storeys also.



Our products are designed as a result of architectural and statical calculations



Prefabricated buildings can be delivered as electrical, sanitary installation, paint and glazing included or if required without them.



The biggest advantage of buildings is being earthquake resistant and lightweight due to steel construction.



Transportation can be by means of trucks, ship, train or cargo aircrafts.



Prefabricated buildings are manufactured in a very short time and enable to fast assembly.



All materials used have ISO 9001. Raw materials are in the norm of TSE and EN.

For Your security and help ,

Find out Your advantage



A world in transformation ,



Unwelded structure technology

*Your Villa of Dreams, all ready in minimum of time , in most cases 1 week
ask for detailed information , and look our quality*

Our ready constructed buildings that have 60-300 mm wall thickness are designed by taking the climatic data into consideration. Being resistant to earthquake, fast manufacturing, easy assembling, economy and being preferable by customers.



A Mix for world best materials,

Galvanised Steel

Fiber Cement Boards



Fiber Cement, Extremely Strong and Nature Friendly



Fibercement

Fibercement, a product of Etex Hoboken (Be), is one of the strongest materials,

Main advantages:

- * No waterabsorbson
- * Class A anti burning
- * Time resistant
- * a green product
- * anti noise qualities
- * easy handling
- * available in many patterns

Fibercement (Natural Cement Board) technology

The idea of finding solutions for exterior and interior surface coverings of buildings has encouraged mankind to develop different products. Production of asbestos based boards used widely before 1990, was terminated since asbestos was prohibited. Producers searched alternative products. 2 main product groups arised as a result of the attempt one of which is synthetic fiber based cement boards and the other one is fibercement boards. Fibercement products consisting of natural cellulose fiber, cement and ground silica instead of synthetic fiber that has not been determined yet by scientists whether has detrimental effects on people even if it is asbestos free, are prefered especially because of usage as exterior and interior plain facade covering. Synthetic based fiber products are used mainly for pressed roof materials.



Ask our separate Catalogue , with all different Patterns

Wood Pattern Board
Wood Pattern Fiber Cement Boards

These plain wood appearance can be used in all places desired as they have same appearance with real wood like surface. They are used widely in facade applications as it does not require maintenance. It can be applied in interior areas to bring an interior appearance. It is also applicable in public places as public materials for wood like appearance from its look.

Surface appearance	Wood Pattern
Board Dimensions	1219x2438 mm
Thickness	8 - 20 - 22 mm
Incombustibility Class	A1

Natural Stone Pattern Board
Natural Stone Pattern Fiber Cement Boards

These natural stone pattern boards are resistant to fire and moisture because of their high resistance value. They are easy to carry and install as they are lighter compared to other natural stone materials. They can be installed in the single mansions or for public use in order to bring a natural look in the interior or exterior. They can be applied with all kind of water resistant plaster coats.

Surface appearance	Natural Stone Pattern Stone
Board Dimensions	1219x2438 mm, 1219x3050 mm
Thickness	12 - 12 mm
Incombustibility Class	A1

Brick Pattern Board
Brick Pattern Fiber Cement Boards

These plain brick pattern boards provide an exterior surface which looks appearance like real brick. They are suitable for applications in interior and exterior facade areas and exterior applications due to their stone like appearance and fire resistance.

Surface Appearance	Brick Pattern
Board Dimensions	1219x2438 mm, 1219x3050 mm
Thickness	12 - 12 mm
Incombustibility Class	A1

Stone Masonry Pattered Board
Stone Masonry Pattered Fiber Cement Boards

These plain boards provide an exterior surface which looks appearance like real stone. They are suitable for applications in interior and exterior facade areas and exterior applications due to their stone like appearance and fire resistance.

Surface appearance	Stone Masonry Pattern
Board Dimensions	1219x2438 mm, 1219x3050 mm
Thickness	10 - 12 mm
Incombustibility Class	A1

Patchwork Stone Pattern Board
Patchwork Stone Pattern Fiber Cement Boards

These plain boards with a combination of different color stone like appearance can be used in all places desired as they are easy to carry and install as they are lighter compared to other natural stone materials. They can be installed in the single mansions or for public use in order to bring a natural look in the interior or exterior. They can be applied with all kind of water resistant plaster coats.

Surface appearance	Patchwork Stone Pattern
Board Dimensions	1219x2438 mm, 1219x3050 mm
Thickness	10 - 12 mm
Incombustibility Class	A1

Block Stone Pattern Board
Block Stone Pattern Fiber Cement Boards

These plain boards with a combination of different color stone like appearance can be used in all places desired as they are easy to carry and install as they are lighter compared to other natural stone materials. They can be installed in the single mansions or for public use in order to bring a natural look in the interior or exterior. They can be applied with all kind of water resistant plaster coats.

Surface appearance	Block Stone Pattern
Board Dimensions	1219x2438 mm, 1219x3050 mm, 1219x3668 mm
Thickness	12 mm
Incombustibility Class	A1

Technical Specifications

Vertical Dimension	Plain and Natural: 1219 x 2438 mm, 1219 x 3050 mm
Thickness	Plain: 8 - 20 mm - Patchwork: 8 - 12 mm
Length / Width Tolerance	± 3 mm / ± 2.75 mm
Thickness Tolerance in board thickness	Plain: ± 0.3 mm - Patchwork: ± 0.3 mm
Board Weight	1.7 mm
Strength of the Tiles	A N 0.3 (x is side length)
Surface Appearance	Plain or Patchwork
Density	1.8500 g/cm ³
Vapor Diffusion Resistance Factor	μ = 250
Porosity	< 5%
Water Absorption (Minimum)	1.84 % (vertical) (horizontal) [- 5.0 % (vertical) (horizontal)]
Fire Resistance	Proven resistant in accordance with TS EN 12467
Water Impregnability	Impervious to water in accordance with TS EN 12467
Water Resistance	Impervious to all clear building waters according to EN 12057-1
Acoustic Coefficient	(Does not contain asbestos) (A1 type plate)
Emission of Other Potentially Substances	No emission of hazardous substances or gases
Quality of Acid Resistance	0.4 - 0.50 (vertical)
Coefficient of Heat Transmission	λ = 0.20 W/mK
Modulus of Elasticity	8000 N/mm ² (longitudinal) 1,600 N/mm ² (transverse)
Water Absorption Rate	0.30 %
Flexibility Rate of Boards on Block	1.903 (vertical) (transverse, horizontal)
Water Effect	0.50 mm/h (24 hour saturation)
Boarding Rules (according to Thickness)	8 mm, 8 mm, 10 mm, 12 mm, 12 mm, 14 mm, 16 mm, 20 mm



Our Software for your Comfort and Economy

Architectural design and software technology

Our company uses X-steel, ArchiCAD, StruCAD, AutoCAD, Sap 2000 (v 14) and Revit in order to manufacture high Standart, technological, everlasting and aesthetic products especially these days when software programs are used in many sectors.

Different processes as conceptual and architectural design, presentation, engineering calculations, sections, 3D modelling, photorealistic pictures, animations, nodal point calculations, listing of materials used to manufacture a building, covering project drawings into numeric datas that computer based production line (CLP) needed, are implemented using high technology.

Xsteel® | ARCHICAD | StruCad® | AutoCAD® | Sap2000® | Revit | CFS | Sta4Cad



Find out in the next pages, what is possible ,



Houses of your DREAMS



For Your reference , pls ask our twin stage villa range if wanted.



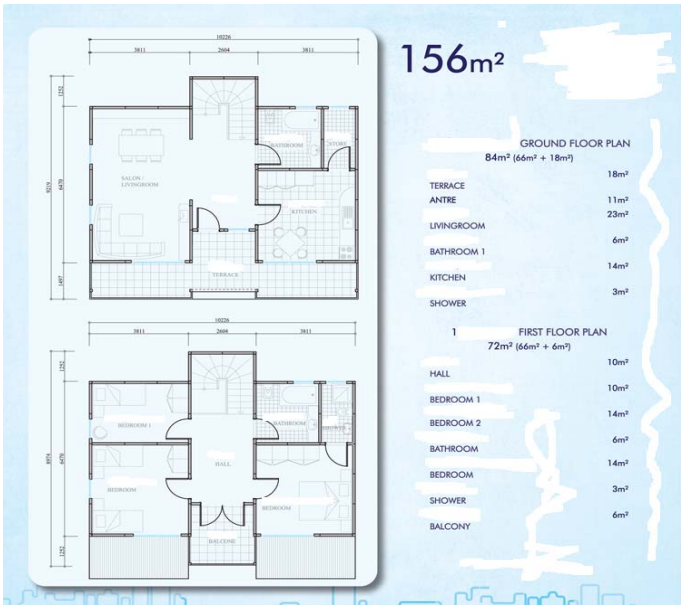
FRONT VIEW

REAR VIEW



LEFT SIDE VIEW

RIGHT SIDE VIEW





FRONT VIEW



REAR VIEW



LEFT SIDE VIEW



RIGHT SIDE VIEW

106m²



FLOOR PLAN
106m² (100m² + 6m²)



6m ²	BEDROOM	16m ²
5m ²	BEDROOM 1	11m ²
24m ²	BEDROOM 2	13m ²

KITCHEN	11m ²
HALL 1	6m ²
BATHROOM	7m ²





FRONT VIEW

REAR VIEW



LEFT SIDE VIEW

RIGHT SIDE VIEW



92m²

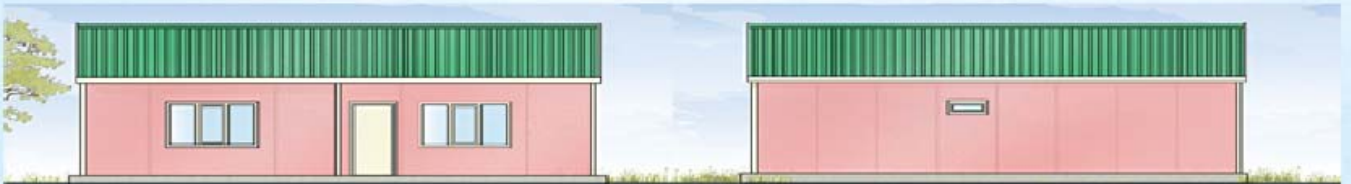


FLOOR PLAN

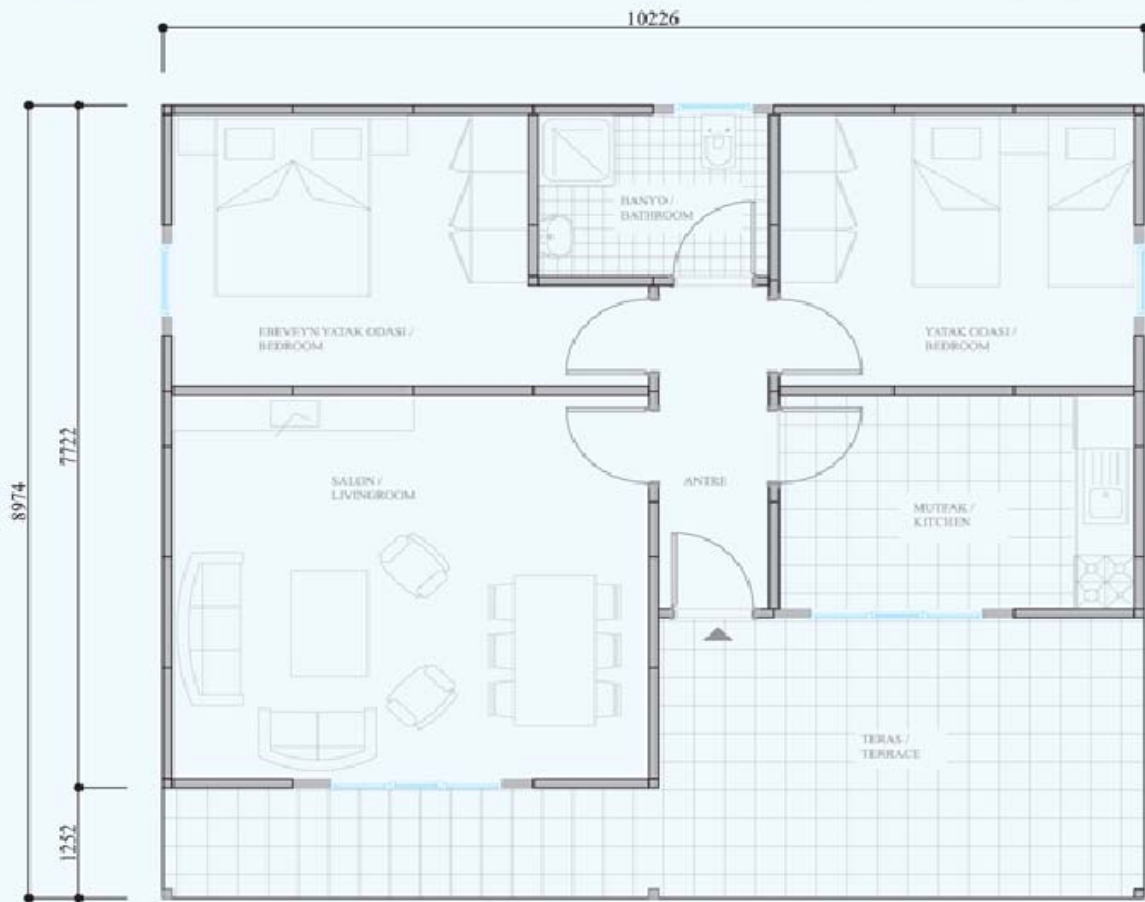
92m²

16m ²	BEDROOM	14m ²	KITCHEN	10m ²
7m ²	BEDROOM	12m ²	BATHROOM	4m ²
23m ²	LIVING ROOM			
	TERRACE			
	ANTRE			





92m²



FLOOR PLAN

92m² (69m² + 23m²)

TERRACE	23m ²	BEDROOM	13m ²	KITCHEN	10m ²
LIVING ROOM	22m ²	BEDROOM	12m ²	ANTRE	4m ²
		BATHROOM		BATHROOM	4m ²





FRONT VIEW



REAR VIEW

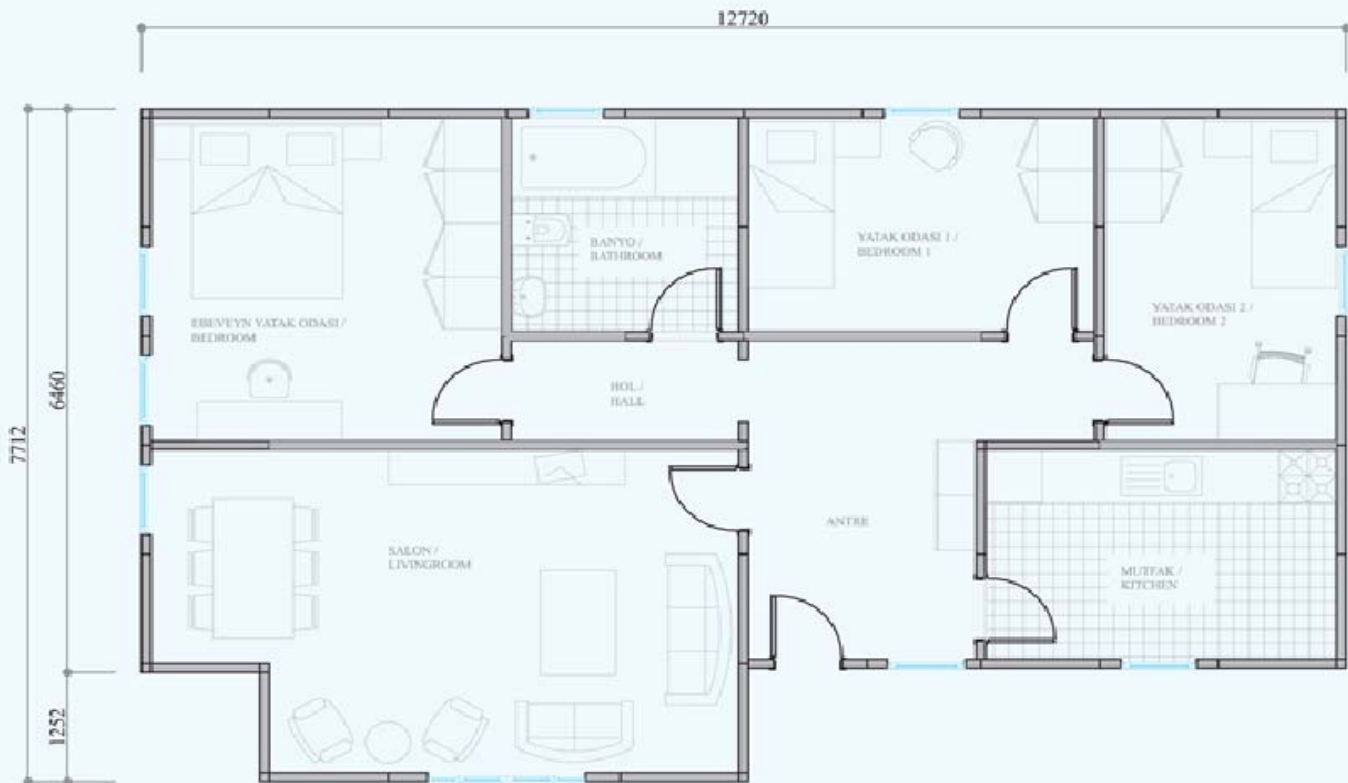


LEFT SIDE VIEW



RIGHT SIDE VIEW

88m²



FLOOR PLAN

88m²

ANTRE	11m ²	BEDROOM 1	10m ²	HALL	3m ²
LIVING ROOM	22m ²	BEDROOM 2	10m ²	BATHROOM	6m ²
BEDROOM	14m ²	KITCHEN	10m ²		





69m²



FLOOR PLAN

69m² (62m² + 7m²)

TERRACE	7m ²	BEDROOM	10m ²	HALL	2m ²
LIVING ROOM	18m ²	KITCHEN	6m ²	BATHROOM	5m ²
BEDROOM	14m ²	ANTRE	3m ²		





FRONT VIEW

REAR VIEW

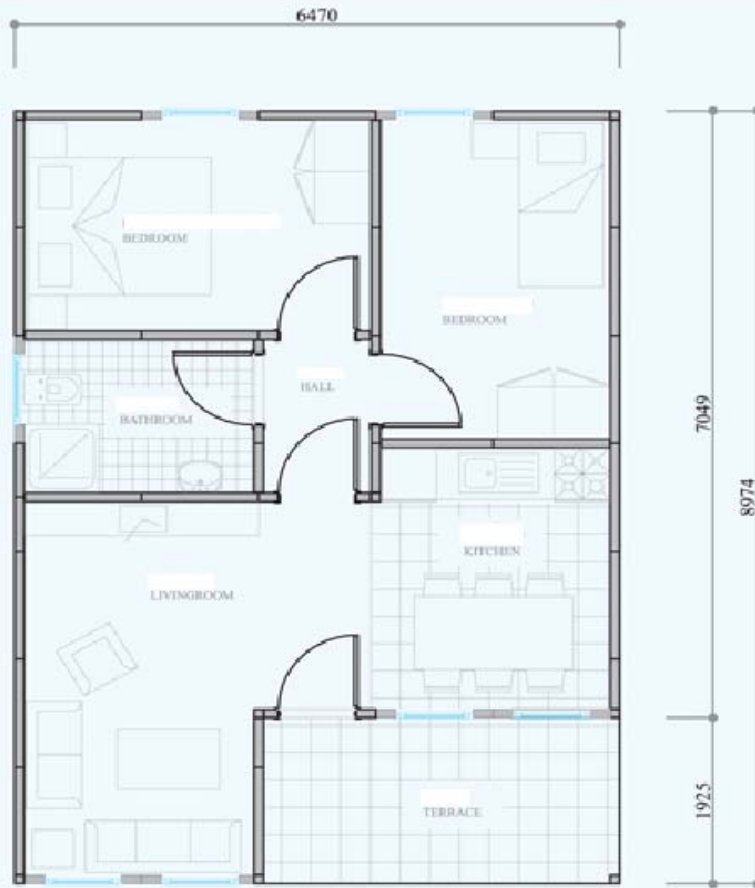


LEFT SIDE VIEW

RIGHT SIDE VIEW



58m²



FLOOR PLAN

58m² (51m² + 7m²)

	7m ²		10m ²		2m ²
	14m ²		10m ²		4m ²
	8m ²				





FRONT VIEW

REAR VIEW



LEFT SIDE VIEW

RIGHT SIDE VIEW

47m²



FLOOR PLAN
47m²

ANTRE	3m ²	BEDROOM	10m ²
LIVING ROOM	19m ²	BATHROOM	3m ²
BEDROOM	10m ²		





FRONT VIEW

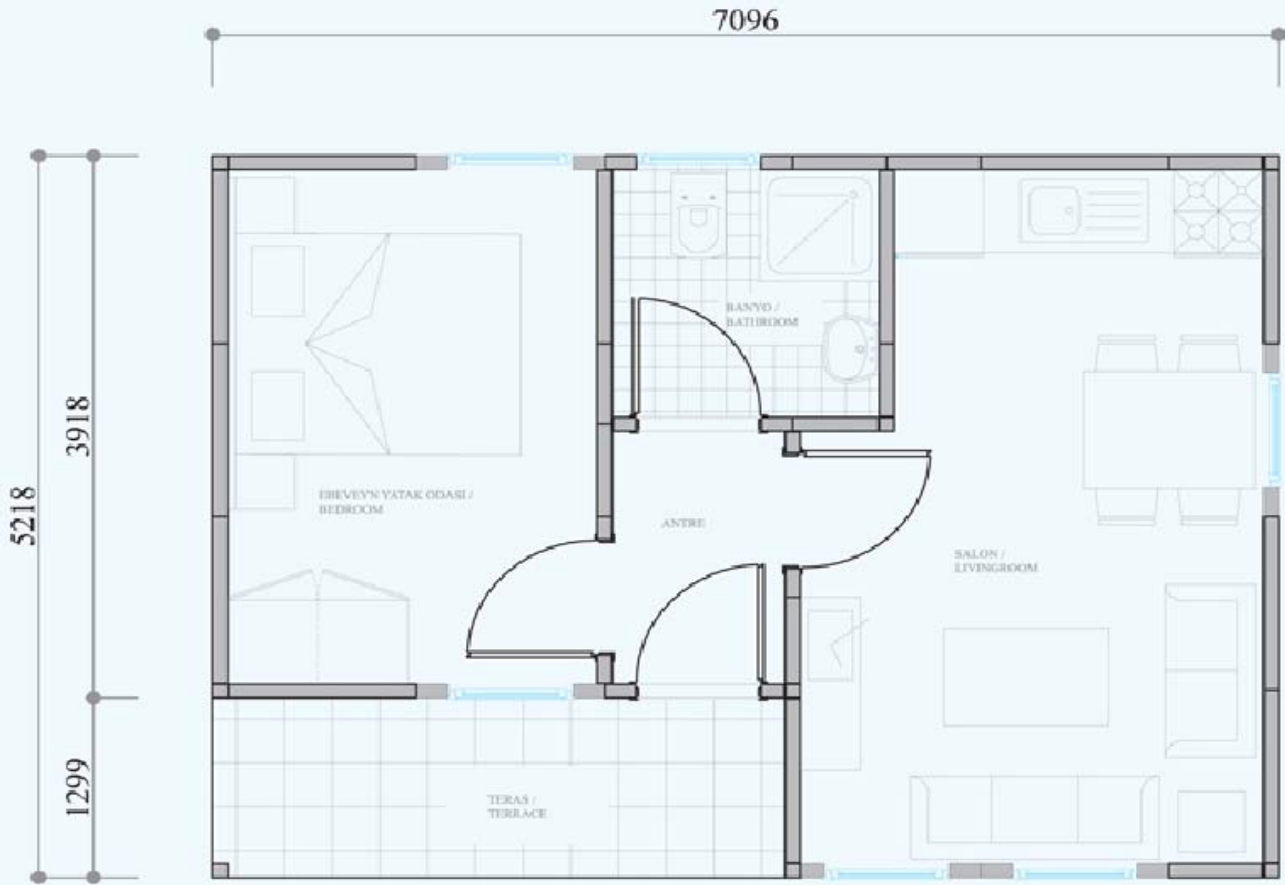
REAR VIEW



LEFT SIDE VIEW

RIGHT SIDE VIEW

37m²



FLOOR PLAN

37m² (32m² + 5m²)

	5m ²		10m ²
TERRACE		BEDROOM	
ANTRE	2m ²		3m ²
	14m ²	BATHROOM	
LIVING ROOM			





FRONT VIEW



REAR VIEW

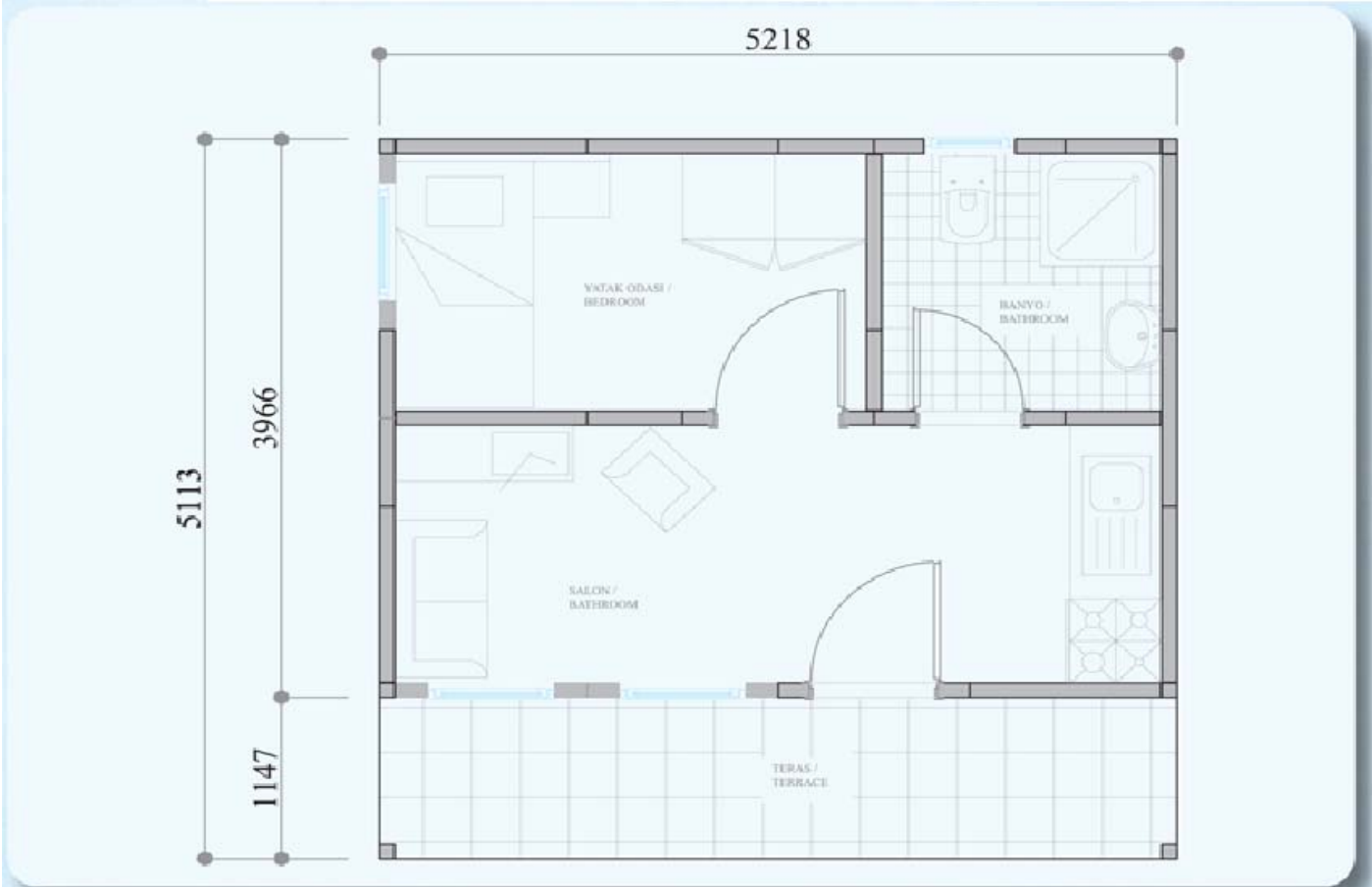


LEFT SIDE VIEW



RIGHT SIDE VIEW

27m²



FLOOR PLAN

27m² (21m² + 6m²)

6m ²	6m ²
TERRACE	BEDROOM
9m ²	BATHROOM
LIVING ROOM	4m ²

